

*Hydro***FLOW**®

ELECTRONIC WATER CONDITIONERS



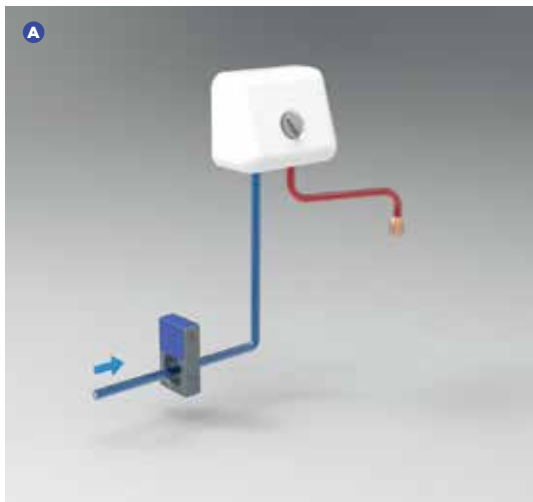
§38 USER GUIDE

IMPORTANT: READ THESE INSTRUCTIONS BEFORE FITTING



CONTENTS

LOCATION	01-02
INSTALLATION & ELECTRICITY	03-04
TROUBLESHOOTING & LOOPS	05-06
GUARANTEE	07-08



LOCATION

For optimal performance, install the unit on the cold feed to the place where the water is heated. This could be on the cold inlet to an instant water heater **(A)** or on the cold inlet to a hot water cylinder **(B)**.





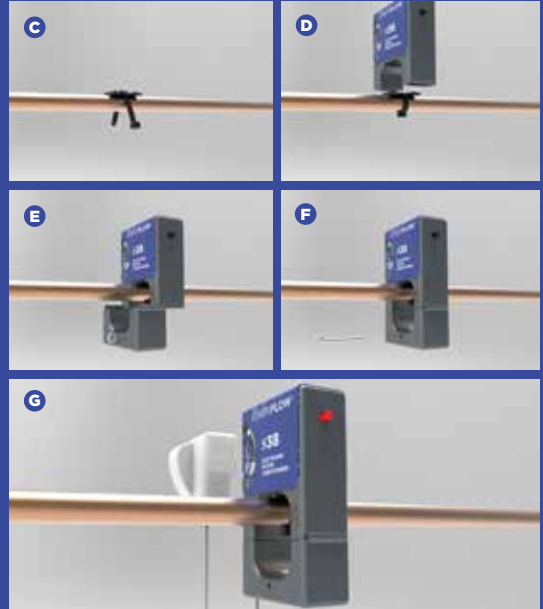
INSTALLATION

1. Pass the tie wrap through the plate and secure to pipe **(C)**.
2. Push the top section firmly onto the plate **(D)**.
3. Slide the bottom section onto the top section **(E)**.
4. Withdraw the split pin **(F)**.
5. Plug PSU into unit and connect to power supply **(G)**.

Note: the unit can be fitted without a clip when the pipe is close to the wall.

ELECTRICITY

As with all electrical equipment, ensure that the equipment is connected in accordance with current electrical regulations in your area.





TROUBLESHOOTING

The red light shows that the signal is being transmitted into the water - it should be bright. If this is not the case check the following:

1. The split pin should be removed from the unit.
2. The mains supply should be on. Check that the PSU is fully plugged into the mains and that the DC jack is fully plugged into the unit.
3. If fitting to metal pipework, avoid placing unit into an electrical loop (see below).

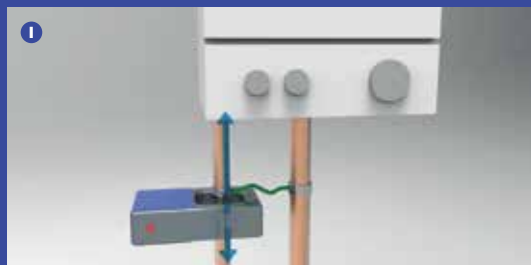
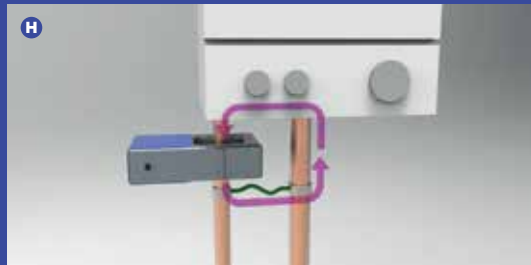
If the unit is fitted in a loop, move the unit to a location outside the loop.

LOOPS

An electrical loop occurs when the signal can travel through metal from one side of the unit to the other **(H)**. If the unit is fitted in a loop, the signal does not propagate correctly and is trapped in the loop. Earth bonding or pipework is a common cause. Loops cannot be formed if the unit is fitted to plastic pipe.

Moving the unit to a location outside the loop - for example "before" the earth bonding - allows the signal to propagate correctly **(I)**. To remove the unit from the pipe, carefully remove bottom unit from top unit.

A quick test to see if the unit is in a loop is to remove the unit from the pipe, reassemble it off the pipe, and see if the light becomes brighter.





GUARANTEE

Should a fault occur with this product within the first year after purchase, then the product will either be repaired or replaced free of charge under the manufacturer's product guarantee (extended guarantees are available). Guarantee claims are strictly limited to the value of the original purchase price and HYDROPATH accepts no responsibility for any consequential loss that may result from a product failure.

- It is a condition of this guarantee that no unauthorised repairs are carried out or attempted as they will invalidate the guarantee. Faulty product that is within the guarantee period should be returned to the point of purchase together with a copy of the bill of receipt.
- HYDROPATH recommends that the unit is wired to a surge-protected power supply, and no claims will be accepted where product failure or damage is the direct result of a surge from an unstable power supply.
- Customers should be aware that water leaks from plumbing systems may result as a consequence of limescale removal. Customers are advised therefore to periodically inspect the plumbing system to ensure that the system and compression joints in particular remain water-tight.
- No claims will be accepted by HYDROPATH for products purchased through un-authorised vendors or re-sellers. A list of authorised vendors can be found on our website.
- This guarantee does not affect a customer's statutory rights.





**FOR ONLINE VERSIONS OF THESE
INSTRUCTIONS IN VARIOUS LANGUAGES,
GO TO WWW.HYDROPATH.COM/INSTRUCTIONS**

T +44(0) 1159 869 966

F +44(0) 1159 869 944

E sales@hydropath.com

w www.hydropath.com

f [hydropath_tech](https://www.facebook.com/hydropath_tech)

t [@hydropathtech](https://twitter.com/hydropathtech)

in [@hydropath](https://www.instagram.com/hydropath)