

HydroFLOW Product Evaluation - Ice Maker



Customer: Hospital in Central Kentucky.

Background: The hospital wanted to improve the performance of the Hoshizaki ice maker at the intensive care unit (ICU), that regularly suffers from scale and biofilm problems.

Solution: 90-day product evaluation with a *HydroFLOW* HS38 water conditioning device.

Timeframe: December 19, 2018 to March 19, 2019.

Installation location of the *HydroFLOW* device



The new *HydroFLOW* Pearl that fits pipes up to 1" outer diameter

A *HydroFLOW* hs38 (now the Pearl) device was installed on the cold water supply line feeding the ice maker

Ice machine tray before and after *HydroFLOW*



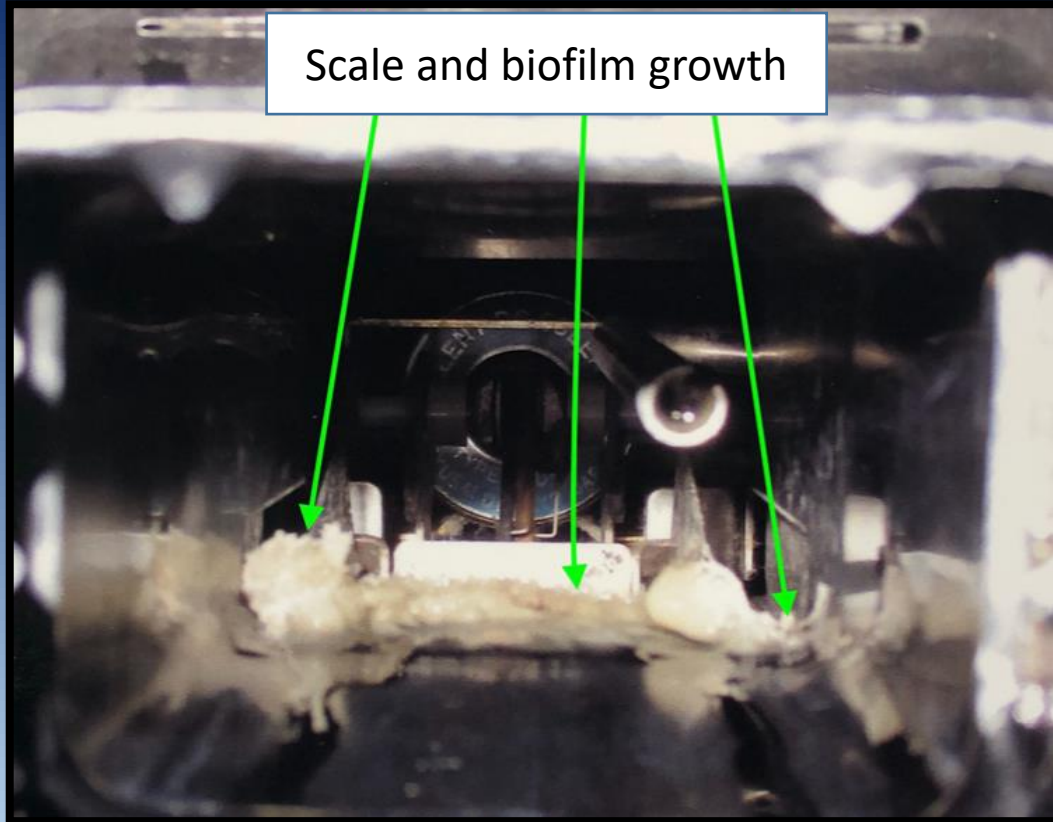
Before



After

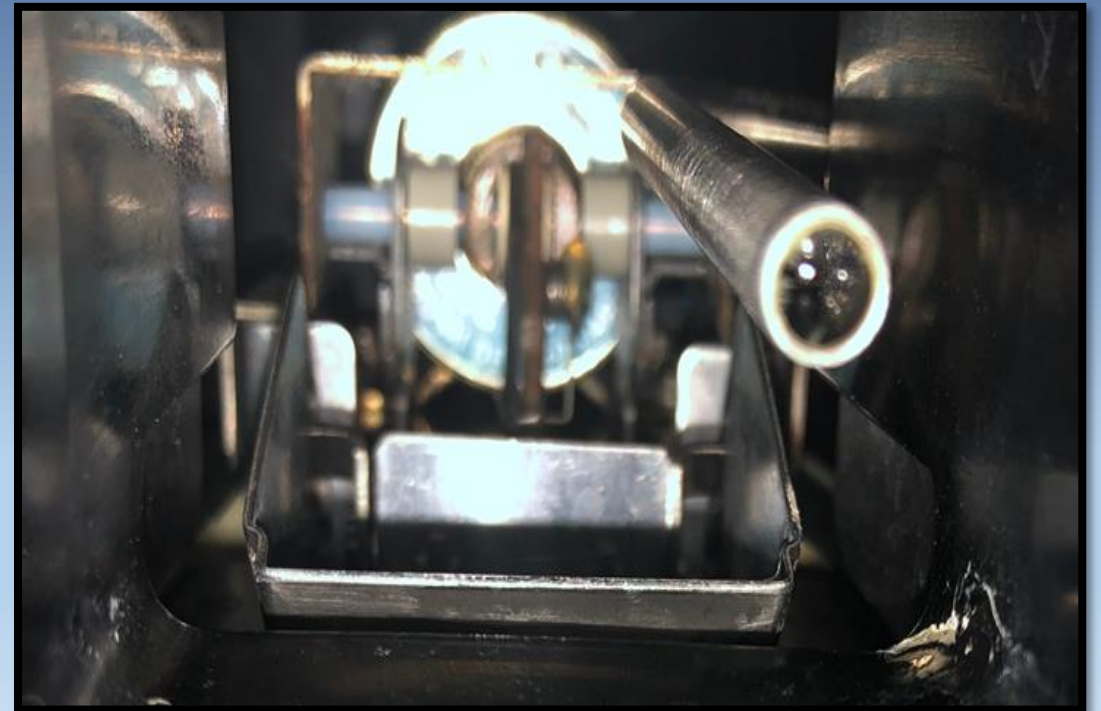


Ice chute before and after *HydroFLOW*



Before

After



Conclusions of the 90-day product evaluation

- The *HydroFLOW* device gradually removed existing scale and biofilm from inside of the ice maker and kept it clean.
- The *HydroFLOW* device greatly reduced the risk of contaminated ice reaching the hospital's staff and patients.
- The *HydroFLOW* device minimized the risk of a disease outbreak, such as Legionella.
- The projected return on investment (ROI), due to lessened maintenance, is under a year.
- Hospital management plans to install *HydroFLOW* devices on equipment throughout the building.



Referral Letter from Director of Facilities

To those concerned,

Over a year ago, Bob Soffel introduced me to *HydroFLOW*, an electronic water conditioner that removes and prevents scale, mold, bacteria and algae in water systems. He presented a lot of supporting data and a sincere passion to serve the healthcare community. We discussed an ice machine that presented chronically with biofilm as a potential trial opportunity.

I agreed to a trial on that ice machine. After a 90-day trial, we found the device works as described; it reduced hard scale and eliminated biofilm and mold. The ice machine that gave us regular challenges was no longer doing so, and was clean upon routine visual inspection. Regular cleaning has been easier and takes less time and interference with regular hospital operations.

After a full year in use, the *HydroFLOW* device on ice machines at our hospital proved to:

- reduce trouble calls due to bio, mold and scale problems.
- reduce risk associated with bio and mold to our patients, staff and visitors.
- reduce costs associated with maintenance, repairs and replacement.
- improve compliance and regulatory standards of care.

I recommend that you consider this product for your ice machines. It certainly reduces maintenance issues due to hard scale and makes regular maintenance much easier. But more importantly, it reduces risk to our patients, staff and visitors. It also helps to keep us compliant with food and safety regulations as well as Joint Commission standards.

Bob is a trusted partner in combating infection potential in water and air applications through proven technology and is focused on delivering the next 'best practices' in modern healthcare facility management. He strives to understand the challenges, is sincere in his approach, and exhibits a technical proficiency of the technologies he chooses to offer.

I intend to continue asking Bob to apply *HydroFLOW* where it can make a positive impact on the various challenges we have within our facility's water systems.

I'd be happy to discuss our experience with my healthcare colleagues. Please coordinate with Bob for my contact information.

Sincerely,

Randy French

Director of Facilities: *“I recommend that you consider this product for your ice machines. It certainly reduces maintenance issues due to hard scale and makes regular maintenance much easier. But more importantly, it reduces risk to our patients, staff and visitors. It also helps to keep us compliant with food and safety regulations as well as Joint Commission standards.”*

For additional data, contact Bob Soffel: bob@ces.works +1 (859) 621 6751