

# *HydroFLOW* Product Evaluation - Ice Maker



**Customer:** Hospital in Central Kentucky.

**Background:** The hospital wanted to improve the performance of the Hoshizaki ice maker at the intensive care unit (ICU), that regularly suffers from scale, biofilm and mold problems.

**Solution:** 90-day product evaluation with a *HydroFLOW* HS38 water conditioning device.

**Timeframe:** December 19, 2018 to March 19, 2019.



# Installation location of the *HydroFLOW* device



*HydroFLOW* HS38 device was installed on the cold water supply line feeding the ice maker

# Ice machine tray before and after *HydroFLOW*



**Before**

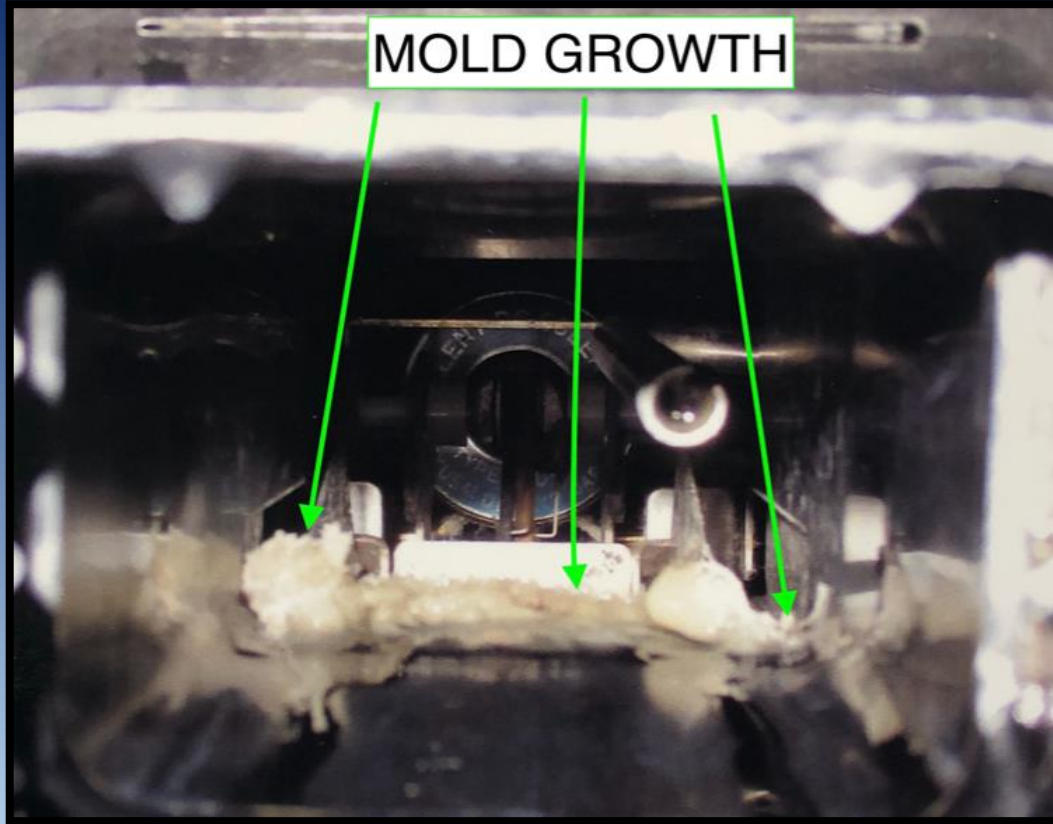


**After**





# Ice chute before and after *HydroFLOW*



**Before**

**After**



# Conclusions of the 90-day product evaluation

- The *HydroFLOW* device gradually removed existing scale, biofilm and mold from inside of the ice maker and kept it clean.
- The *HydroFLOW* device greatly reduced the risk of contaminated ice reaching the hospital's staff and patients.
- The *HydroFLOW* device minimized the risk of a disease outbreak, such as Legionella.
- The projected return on investment (ROI), due to lessened maintenance, is under a year.
- Hospital management plans to install *HydroFLOW* devices on equipment throughout the building.



*For additional data,  
contact Bob Soffel:  
[bob@ces.works](mailto:bob@ces.works)  
+1 (859) 621 6751*